

# INDIGENOUS MONITOR OVERVIEW REPORT

---

**Month: September 2021**

**Indigenous Monitor days on-site: 26**

**Project Region: Yellowhead, Spread 2**

**Kilometre Posts (KPs) monitored:  
KP 94–377**

## **Indigenous Monitors on the Trans Mountain Expansion Project – Overview**

The Trans Mountain Expansion Project (the Project or TMEP) is retaining Indigenous Monitors as integrated members of its construction Environmental Inspection team. Indigenous Monitors work with Environmental Inspectors to monitor compliance with mitigation measures to minimize impacts to traditional resource use and cultural/heritage sites during construction. Indigenous Monitors have a strategic role in providing traditional knowledge directly and pragmatically to construction oversight practices and bring an Indigenous lens to daily environmental inspection activities.

This Overview Report provides highlights of the Indigenous Monitors' day-to-day work and key mitigation measures observed by the Monitors related to Project construction in the Yellowhead Region. The purpose of this report is to provide an update on Indigenous Monitor activity to Indigenous groups.

During this reporting period, key activities in the Yellowhead Region involving Indigenous Monitors took place from KP 134–377 in Spread 2 and included monitoring topsoil stripping and grading, vegetation management, wetland crossing and Traditional Land Use (TLU) sites. The Project Construction Progress Report (Condition 106) for August 2021, which reports environmental events and deficiencies in Tables 4 and 5 respectively, is found [here](#).

The Project has a process for sharing information related to potential TLU and Heritage Resource chance finds during construction. The [Protecting TLU and Cultural Heritage Resources Fact Sheet \(link here\)](#) provides an overview of the chance find communication process. Applicable Indigenous groups are notified and engaged directly on potential chance finds.

**For more information: email [info@transmountain.com](mailto:info@transmountain.com) or call 1.866.514.6700.**

## **Trans Mountain COVID-19 – Our Response**

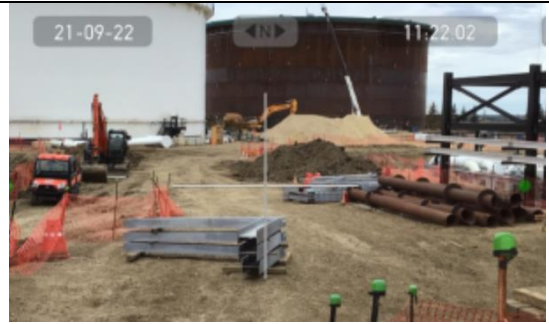
Trans Mountain is actively monitoring the COVID-19 situation with the help of federal, provincial and local agencies. Trans Mountain's top priority remains the health and safety of its workforce, their families and our communities.

**For more information: [transmountain.com/covid19](https://transmountain.com/covid19)**

## Pump Station Inspection

As part of the Trans Mountain Expansion Project, 12 new pump stations are being added to the pipeline system, 11 for the new pipeline and one for the existing pipeline. Pump stations are a critical component of the operations of the pipeline system. They contain electric motors to drive the pumps that maintain the pressure and flow rate in the pipeline.

In September, an Indigenous Monitor expressed interest in doing an Inspection of the Edmonton Terminal after not being on that site for many months. This site visit was supported by an Environmental Inspector. The Indigenous Monitor noted a great deal of change due to completed construction since he last inspected this location. The Facilities Environmental Protection Plan was reviewed and referenced during the inspection to ensure correct mitigations were identified. The inspection included observing the site's waste management procedures and disposal bins. No environmental concerns were noted at the time of the inspection.



Construction underway at Edmonton Terminal.

## Topsoil Stripping and Grading

At KP 132, topsoil stripping and grading activities are taking place. When removing topsoil, required mitigations include the inspection of topsoil pile(s) to ensure equipment arrives clean on-site, soil piles are placed within the survey limit of the right-of-way, soil piles are properly labelled and topsoils and transition piles have adequate buffers.

The Indigenous Monitors were involved in monitoring and inspecting such topsoil stripping mitigations. They also inspected the stripped areas to investigate if any potential chance finds that could be unearthed. No issues or chance finds were identified.



Topsoil on steep slope KP 132.



Topsoil stripping KP 132.

## Vegetation Management

Trans Mountain conducts routine vegetation management on the right-of-way and at facilities. Trans Mountain is responsible for managing problem vegetation including:

- Noxious weeds that pose a hazard to people, animals or crops.
- Invasive weeds, which are plants that have been introduced into the environment that threaten naturally occurring and indigenous plants.

Indigenous monitors inspected the Level 1 Cleaning station at KP 117.530. This cleaning station is strategically located near an area identified with high-density weeds. The cleaning station will ensure the weeds are not spread by construction activity. There were no deficiencies at the time of inspection.



Level 1 Cleaning Station KP 117+530.

## Wetland Site Crossing

Wetland crossing is informed by requirements outlined in the Environmental Protection Plan, Site-Specific Wetland Crossing Execution Plan and Applicable Provincial Permits. Indigenous Monitors review the requirements outlined in the above documents before and during their inspections. These inspections consider spill response and mitigations that are in place, topsoil being stored separately from upland soils and erosion and sediment control measures in place.

At wetland 459C, KP 133, Indigenous Monitors reviewed the Site-Specific Wetland Crossing Execution Plan that had been recently approved. The contractor ensured that equipment and vehicles arrived at the work-site clean and free of soil and vegetative debris. Indigenous Monitors observed the execution of mitigations, such as matting, geotech/wing walls and clay ramps being installed and wetland topsoil being stored separately from upland soil. No environmental concerns were noted at the time of inspection.



Wetland boundary at KP 133.



Topsoil removed in boundary Wetland 459C.

## TLU Sites

During construction, cultural use areas are noted along the right-of-way. Such locations have been identified during TLU studies conducted by Indigenous groups prior to construction. As part of the Environmental Protection Plan, a TLU Sites Discovery Contingency Plan outlines steps to take if previously unidentified TLU sites are identified during construction.

Indigenous Monitors inspected previously identified TLU sites along the right-of-way, including but not limited to: TLU-7, TLU-8, TLU-9, TLU-12, TLU-13 and TLU-14.

Mitigation measures in place included signage, flagging and documentation of any current use. Indigenous Monitors report deficiencies in these mitigations to an Environmental Inspector. Indigenous Monitors assist, where possible, with corrective actions and confirm completion. An Indigenous Monitor noted that the signage for TLU 9 was placed in a location off the right-of-way making it difficult to see. It was also noted that the east boundary signage for TLU 4 was missing. The Environmental Inspector entered the corrective action and signage was moved to the appropriate position and replaced. There are no outstanding deficiencies at the above-mentioned TLU sites.



Monitoring previously identified TLU sites along the right-of-way near KP 117.

## Indigenous Monitor Request Dashboard

Indigenous Monitors are provided with daily on-site field support from Environmental Inspectors and office support from Indigenous Monitor Coordinators. Indigenous Monitors can also make specific support requests or submit questions through their daily report. Examples include but are not limited to requests for Project reports, input from an environmental resource specialist or on-site support from an Elder or other cultural knowledge holder. Monthly requests and their completion status are noted below.

| Status      | Rolling Total and Type of Requests |                                    |                                 |       |       |
|-------------|------------------------------------|------------------------------------|---------------------------------|-------|-------|
|             | Project Reports/Documents          | Environmental Resource Specialists | Elder/Cultural Knowledge Holder | Other | Total |
| Total       | 6                                  | 1                                  | 5                               | -     | 12    |
| Fulfilled   | 6                                  | 1                                  | 5                               | -     | 12    |
| Outstanding | -                                  | -                                  | -                               | -     | -     |

This report has been reviewed by the active Indigenous Monitor(s)

### CONTACT US: Trans Mountain

✉ [info@transmountain.com](mailto:info@transmountain.com)  
☎ 1.866.514.6700  
🌐 [transmountain.com](http://transmountain.com)

🐦 [@TransMtn](https://twitter.com/TransMtn)

📺 [youtube.com/transmtn](https://youtube.com/transmtn)

🌐 [in](https://www.linkedin.com/company/transmountain/)

📍 PO Box 81018  
Burnaby, BC V5H 3B0

