

INDIGENOUS MONITOR OVERVIEW REPORT

Month: September 2021

**Project Region: North Thompson
(Spread 3/4Aa and Spread 4B)**

Indigenous Monitor days on-site: 26

**Kilometre Posts (KPs) monitored:
Spread 3/4A: 470–696
Spread 4B: 697–764**

Indigenous Monitors on the Trans Mountain Expansion Project – Overview

The Trans Mountain Expansion Project (the Project or TMEP) has retained Indigenous Monitors as integrated members of its construction Environmental Inspection team. Indigenous Monitors work with Environmental Inspectors to monitor compliance with mitigation measures to minimize impacts to traditional resource use and cultural/heritage sites during construction. Indigenous Monitors have a strategic role in providing traditional knowledge directly and pragmatically to construction oversight practices and bring an Indigenous lens to daily environmental inspection activities.

This Overview Report provides highlights of the Indigenous Monitors' day-to-day work and key mitigation measures observed by the Monitors related to Project construction in the North Thompson Region. The purpose of this report is to provide an update on Indigenous Monitor activity to Indigenous groups.

During this reporting period, key activities in the North Thompson Region involving Indigenous Monitors took place from KP 470–696 in Spread 3/4A and 697–764 in Spread 4B and included monitoring and taking part in Traditional Land Use (TLU) plant harvest, spawning deterrents, vegetation management and Culturally Modified Trees. The Project Construction Progress Report (Condition 106) for September 2021, which reports environmental events and deficiencies in Tables 4 and 5 respectively, is found [here](#).

The Project has a process for sharing information related to potential Traditional Land Use (TLU) and Heritage Resource chance finds during construction. The [Protecting TLU and Cultural Heritage Resources Fact Sheet \(link here\)](#) provides an overview of the chance find communication process. Applicable Indigenous groups are notified and engaged directly on potential chance finds.

For more information: email info@transmountain.com or call 1.866.514.6700.

Trans Mountain COVID-19 – Our Response

Trans Mountain is actively monitoring the COVID-19 situation with the help of federal, provincial and local agencies. Trans Mountain's top priority remains the health and safety of its workforce, their families and our communities.

For more information: transmountain.com/covid19

Vegetation Management

Trans Mountain conducts routine vegetation management on the right-of-way and at facilities, which includes managing problem vegetation such as:

- Noxious weeds that pose a hazard to people, animals or crops.
- Invasive weeds, which are plants that have been introduced into the environment that threaten naturally occurring and indigenous plants.

Indigenous Monitors inspected the Level 1 Cleaning station at KP 722.59. This cleaning station is strategically located near an area identified with high density weeds. The cleaning station will ensure the weeds are not spread by construction activity. There were no deficiencies noted at the time of inspection.



Noxious weed zone KP 726+800.



Traditional Land Use Plant Harvest

Indigenous Monitors can invite Elders and/or Knowledge Holders to site to assist the Indigenous Monitor with interpretation, understanding or other support related to a traditional use or cultural feature.

In September, Simpcw First Nation and Tk'emlúps Language Houses had a joint site visit related to plant harvesting. Simpcw First Nations Language House commissioned a Knowledge Holder from Simpcw First Nation and Tk'emlúps te Secwépemc to participate in the harvest of Western yew trees and to share their knowledge of selecting trees for making a bow and other tools.

The harvesting activity took place near Blue River just off the right-of-way. While on-site, an Elder from Simpcw First Nation harvested parts of the yew tree and a devil's club for medicinal purposes. This visit supported knowledge sharing and learning among the participants, parts of which were captured by a videography crew from the Tk'emlúps Language House for cultural learning purposes.



Western yew tree harvested for traditional use.



Yew tree flagged for harvest.

Culturally Modified Trees (CMTs)

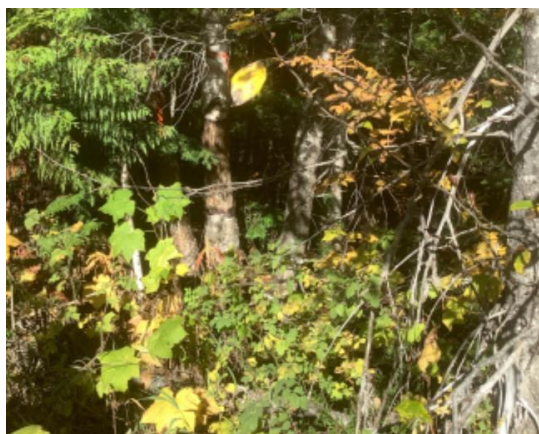
Resource-Specific Mitigation Tables and Environmental Alignment Sheets are used to illustrate locations of and summarize specified mitigation for previously identified historical resources and TLU areas. Such locations have been identified via TLU studies conducted by Indigenous groups and archaeology baseline assessments that have been conducted in relation to the Project for more than seven years. In the event a site or location is observed in the field that may be a previously unidentified TLU area, the TLU Site Discovery Contingency Plan is followed.

With all preliminary CMT sweeps completed in previous months, clearing crews have started their work. Indigenous Monitors are called upon during clearing activities to assess potential chance finds and complete additional CMT sweeps as access roads are constructed. Along the right-of-way (ROW), there was a potential chance find assessed. The Indigenous Monitor determined that it was not a stripped birch, but that the missing bark was caused by frost damage. Clearing crews were able to continue their work.

At another point, there was a cluster of cedar CMT's found. The site discovery contingency plan was followed. The trees are located off the ROW, have been marked and flagged. The area was flagged off for additional evaluation. Resource specialists were contacted for evaluation of the tree and potential mitigation. The engagement process with applicable Indigenous groups was initiated to share information about the resource and seek feedback. The assessment of this resource is in progress.



General area of CMT sweep off ROW



Frost cracked Birch tree.

Indigenous Monitor Request Dashboard

Indigenous Monitors are provided with daily on-site field support from Environmental Inspectors and office support from Indigenous Monitor Coordinators. Indigenous Monitors can also make specific support requests or submit questions through their daily report. Examples include but are not limited to: request for Project reports, input from an environmental resource specialist and on-site support from an Elder or other cultural knowledge holder. Monthly requests and their completion status are noted below.

Status	Rolling Total and Type of Requests				
	Project Reports/Documents	Environmental Resource Specialists	Elder/Cultural Knowledge Holder	Other	Total
Total	0	0	1	0	1
Fulfilled	-	-	1	-	1
Outstanding	-	-	-	-	-

This report has been reviewed by the active Indigenous Monitor(s)

CONTACT US:

Trans Mountain
 info@transmountain.com
 1.866.514.6700
 transmountain.com



@TransMtn



[youtube.com/transmtn](https://www.youtube.com/transmtn)



PO Box 81018
 Burnaby, BC V5H 3B0

