



TRANSMOUNTAIN

Construction Update Notice

## WESTRIDGE MARINE TERMINAL: Update on Night Work

We're working in your neighbourhood of Burnaby, BC

**September 7, 2021 to March 6, 2022\***

As a neighbour of Trans Mountain's Westridge Marine Terminal (WMT), you are receiving this Update Notice to ensure that you are kept informed of construction activity at the Terminal as part of the Trans Mountain Expansion Project. On February 7, 2020 Trans Mountain announced an updated Project Schedule, with a new in-service date of December 2022 (Westridge, Berth 1 and 2).<sup>\*</sup> Please visit [www.transmountain.com/Burnaby](http://www.transmountain.com/Burnaby) to access the latest Project information and sign up for automatic updates.

Trans Mountain continues in-water and foreshore construction at WMT including pile driving for marine dock structures and sheet cell pile driving within the turbidity curtain as part of the foreshore extension. Onshore construction activity includes soil improvement works in the foreshore area and the relocation of existing marine terminal infrastructure to accommodate the Expansion Project.

### EXTENDED WORK HOURS – WMT FORESHORE AREA

The Vancouver Fraser Port Authority (the port authority) recently approved a six-month extension to a limited scope of construction activities at the Terminal to 24 hours per day, Monday to Saturday, effective September 7, 2021 for approximately 6 months. This update highlights an additional scope of work included in the nightwork approval.

This extension is for a continuation of already approved activities. All general construction activities related to the Project currently take place during regular construction hours between 7:00 am and 8:00 pm Monday to Saturday as stipulated under the port authority permit PER # 19-162. Night work **will not** include pile driving operations; those activities will continue to occur only during daytime regular construction hours.

There is constrained daytime site access to WMT due to existing marine terminal operations which need to continue to safely and efficiently deliver oil, gasoline and jet fuel to British Columbia and other markets.

Challenging ground conditions in the marine terminal foreshore area have increased the complexity and duration of the ground improvement work due to obstructions encountered at various depths in the ground (including rock and cobble material). To meet Project schedule constraints and accommodate the terminal's operations, some essential works need to be completed during a night shift.

All work to be completed on night shift would adhere to the requirements and conditions originally outlined in port authority permit #19-162. This includes abiding by all noise, lighting and environmental requirements in the Project Permit Application as well as the Westridge Marine Terminal Environmental

Protection Plan (CER Filing ID A6G2L1) <sup>1</sup> and Noise Management Plan (CER Filing ID A7I3K1) <sup>2</sup>. All emergency plans and resources would be maintained through night shift work hours.

The work activities proposed to be conducted at night will include:

- Ground Improvement on the foreshore to improve long term ground stability
- Construction of a Guided Horizontal Auger Bore Sending Pit to install utilities under the CP Rail track
- Installation of Foreshore Utilities

## **APPROVED NIGHT SHIFT ACTIVITIES**

### **Foreshore Ground Improvement:**

Trans Mountain continues to work on extending the land along the water to accommodate new equipment and facilities including:

- Dock pipelines and metering equipment
- Emissions management equipment
- Firewater and foam pumping system
- Storm water management system
- Electrical equipment and control system
- New control building
- Emergency response equipment

Construction activities associated with the ground improvement night shift work include:

- Drilling operations to support core drilling and jet grouting
- Operations to facilitate the supply of grout from an on-site batch plant and on-site handling of spoils

### **Construction of Guided Horizontal Auger Bore (GHAB) Sending Pit:**

The installation of utilities under the CP Rail tracks will be completed utilizing a trenchless GHAB operation.

Construction activities include:

- Excavation of GHAB Sending Pit to facilitate auger boring
- Horizontal auger boring for utilities installation
- Pipe fitting and welding

---

<sup>1</sup> Westridge Environmental Protection Plan, Condition 81 [CER Filing ID A6G2L1]: <https://apps.cer-rec.gc.ca/REGDOCS/Item/View/3581455> (Accessed July 26, 2021)

<sup>2</sup> Westridge Marine Terminal Nightshift Noise Management Plan Addendum to Condition 80 [CER Filing ID A7I3K1]: [https://docs2.cer-rec.gc.ca/ll-eng/llisapi.dll/fetch/2000/90464/90552/548311/956726/2392873/3781699/3962306/C08209%2D1\\_Condition\\_80\\_WMT\\_Night\\_Shift\\_Noise\\_Management\\_Plan\\_Addendum\\_September\\_8%2C\\_2020\\_%2D\\_A7I3K1.pdf?nodeid=3962307&vernum=-2](https://docs2.cer-rec.gc.ca/ll-eng/llisapi.dll/fetch/2000/90464/90552/548311/956726/2392873/3781699/3962306/C08209%2D1_Condition_80_WMT_Night_Shift_Noise_Management_Plan_Addendum_September_8%2C_2020_%2D_A7I3K1.pdf?nodeid=3962307&vernum=-2) (Accessed July 26, 2021)



- Examination of pipe using radiography
- Sandblasting for pipe coating application

**Foreshore Utility Installation**

Utility installation will take place in areas of the foreshore where ground improvement works have been completed. The utility installation work initiated in March 2021 will continue for an additional 6-month period and include the following activities:

- Equipment operation for excavation of trenches, backfilling and compaction of fill
- Installation of utilities such as conduit, pipe, manholes and sumps

Trans Mountain and its acoustic consultants have completed an assessment of the potential noise sources related to the night shift construction activity mentioned above and anticipate that noise levels associated with this construction activity will remain within the nighttime Permissible Sound Levels outlined in the Project permit and the Westridge Noise Management Plan Night Shift Addendum which meet with BC Oil and Gas Commission Guidelines and were approved by the CER.

**PROPOSED MITIGATIONS TO MINIMIZE DISTURBANCE**

Trans Mountain is proposing to put in place the following mitigation measures to minimize potential disturbance from night shift construction activities:

- Where possible limit use of generators and light plants
- Noise barriers to be deployed close to noisy activities to block effects on residential areas; including north shore areas. This includes the installation of a 12' sound wall on the foreshore to minimize effects of drilling operations on residential neighbourhood.
- Use of directional lighting to limit light pollution to surrounding area (people/birds)
- Minimize vehicle use on site
- Continuous noise monitoring and deployment of noise mitigations as per the noise management plan
- Use of hoard piping with welding tents to eliminate visible welding activity at night
- Offsite parking with shuttle transportation to minimize vehicle traffic accessing the site

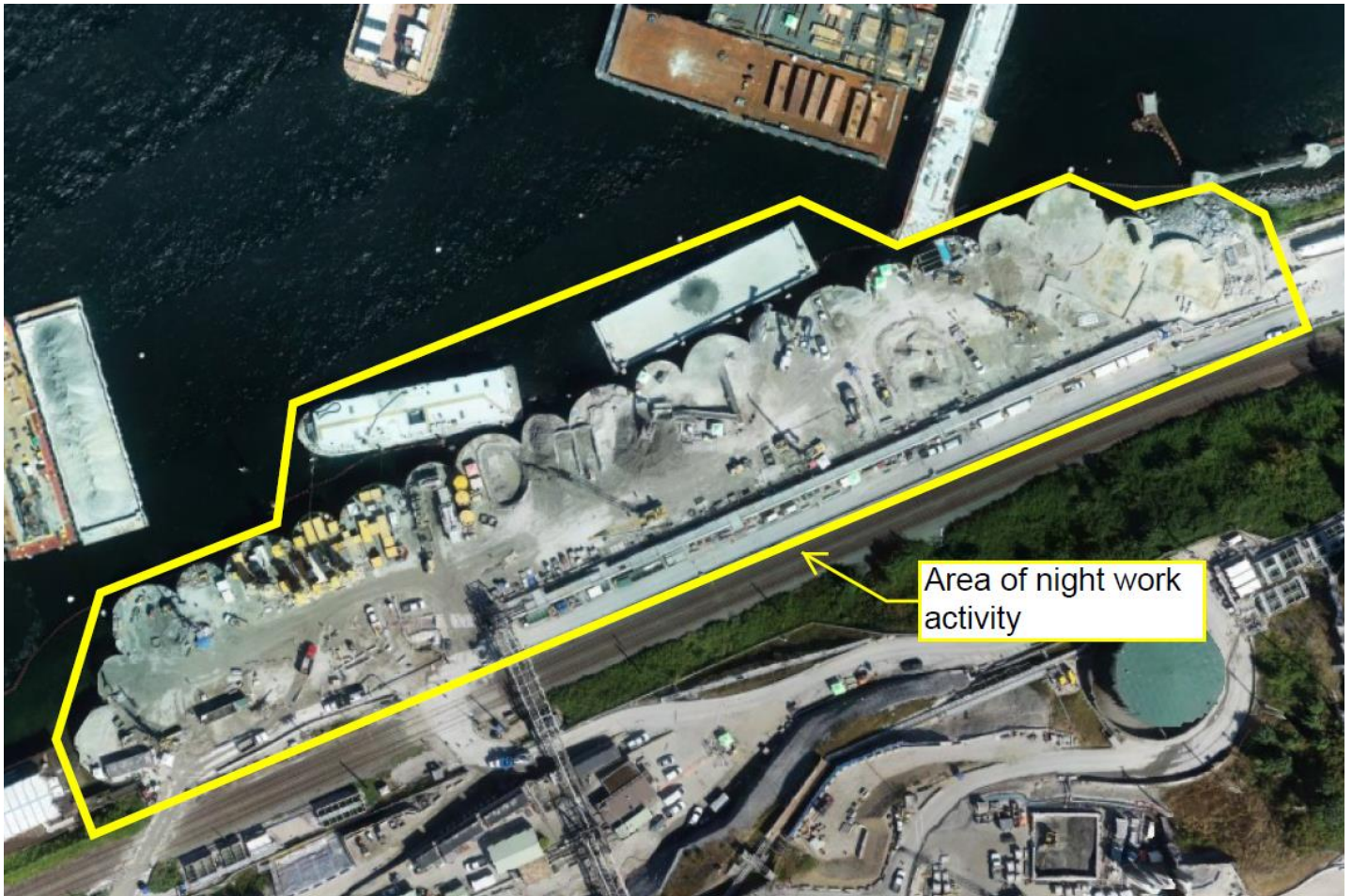
Should you have concerns regarding this work, please contact us at **1.866.514.6700** or [info@transmountain.com](mailto:info@transmountain.com).

For questions for the port authority's review of these proposed works, please call 604.665.9004 or email [Community.Feedback@portvancouver.com](mailto:Community.Feedback@portvancouver.com).

Visit our Westridge Marine Terminal web page at: [www.transmountain.com/westridge-marine-terminal](http://www.transmountain.com/westridge-marine-terminal)



SITE LOCATION



***Trans Mountain's first priority is the health and safety of our workforce, their families and our communities. In response to the evolving COVID-19 pandemic, Trans Mountain and our construction contractors for the Trans Mountain Expansion Project have been working diligently together to ensure adherence to all advice and direction from government and health officials both provincially and federally.***

***For more information on Trans Mountain's COVID-19 response, please visit [transmountain.com/covid19](https://transmountain.com/covid19)***

**CONTACT US:**  
Trans Mountain

✉ [info@transmountain.com](mailto:info@transmountain.com)  
☎ 1.866.514.6700  
💻 [transmountain.com](https://transmountain.com)

🐦 [@TransMtn](https://twitter.com/TransMtn) 📺 [youtube.com/transmtn](https://youtube.com/transmtn)  
📍 PO Box 81018  
Burnaby, BC V5H 3B0

**Pipeline or construction  
emergency?**  
Call 24/7: 1.888.876.6711